



**One Stop Solution for All
Your Engineering Needs!!!**

Complete

Turnkey Solutions....!

Vision, Mission & Values



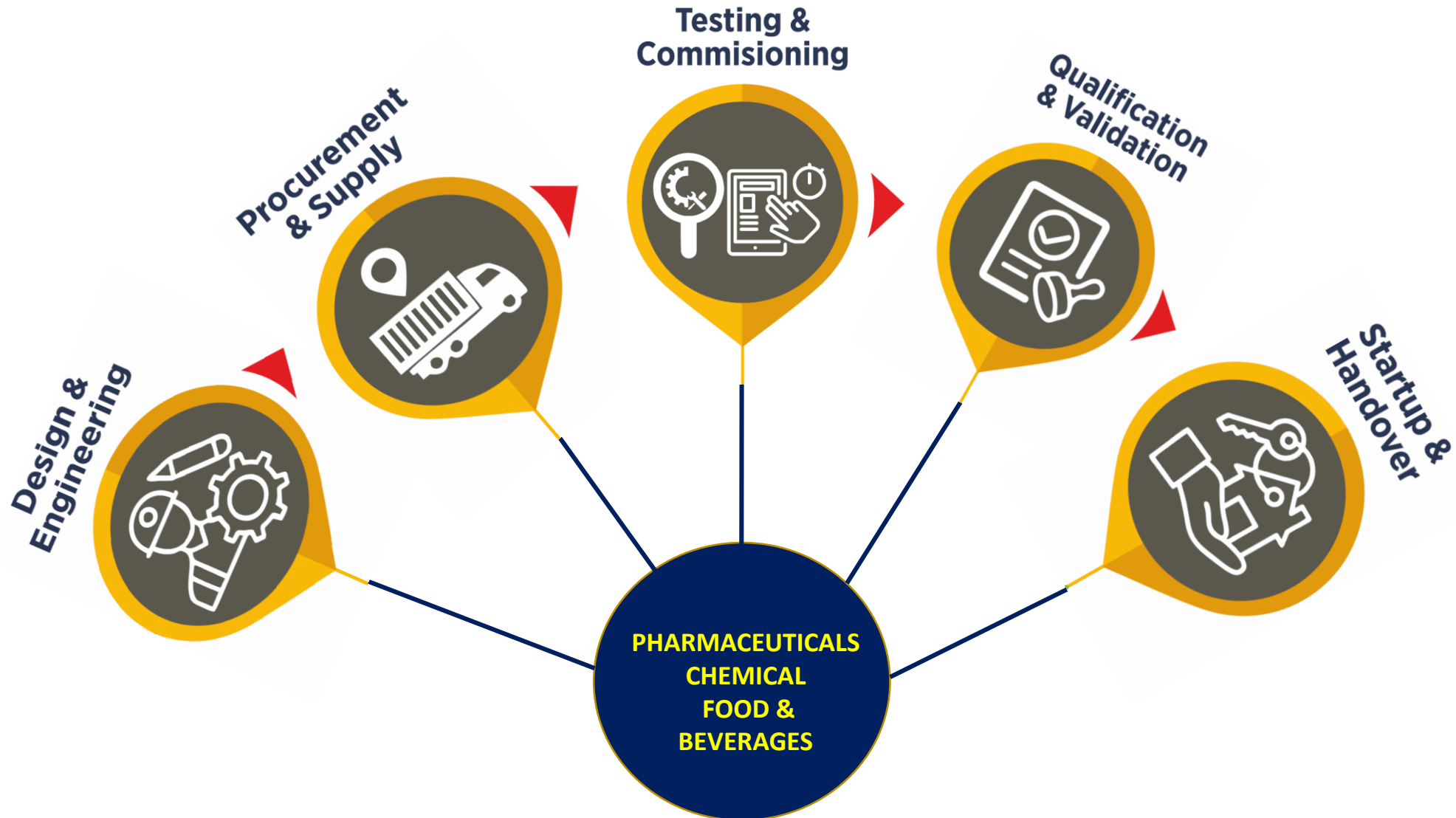
Be the world's premier engineering, procurement, construction, and project management organization by achieving extraordinary results for our customers, building satisfying careers for our people, and earning a fair return on the value we deliver.



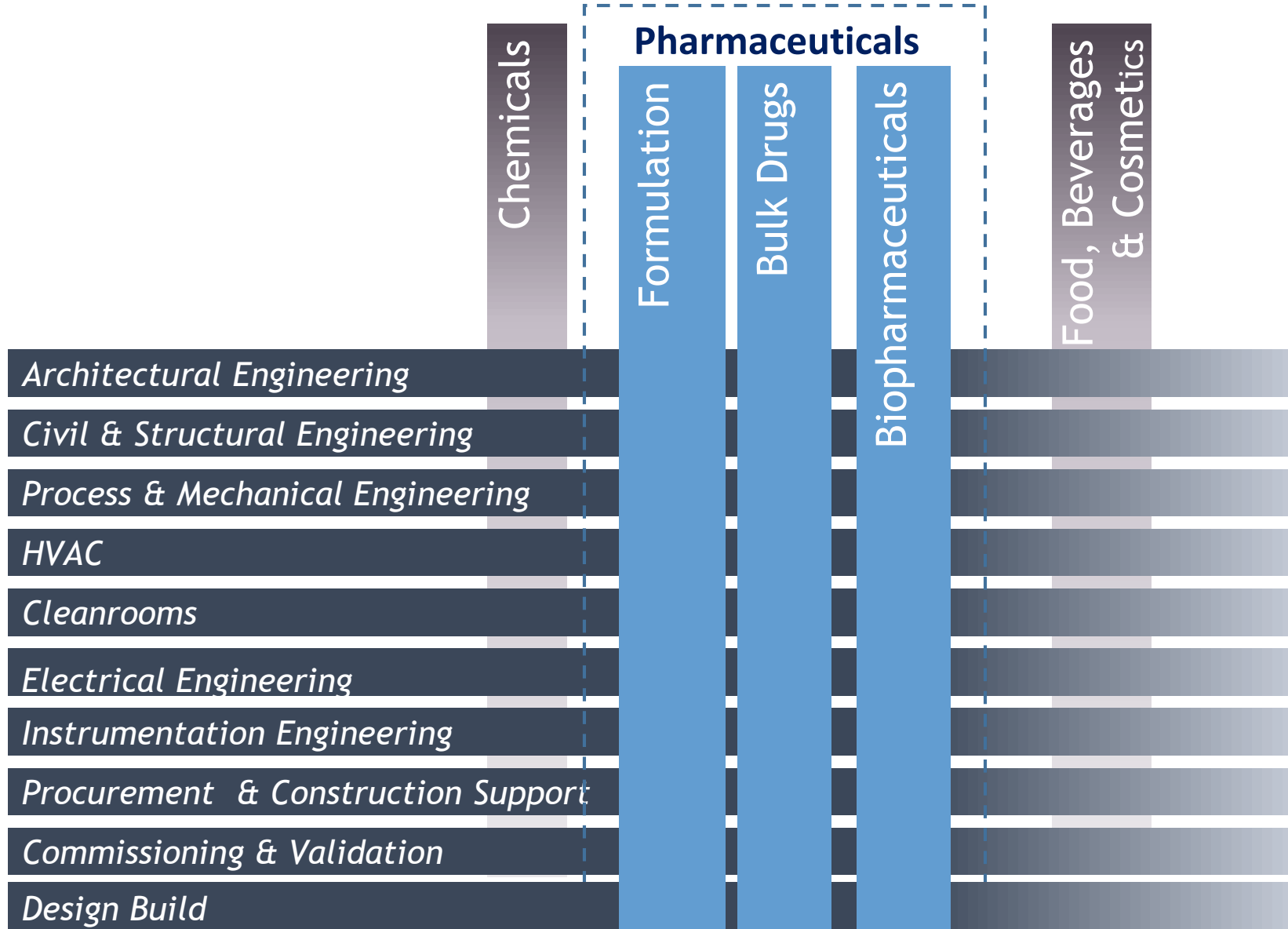
To provide technically excellent and innovative solutions, for adding value for all clients and operate globally as professional organization.



- Customer satisfaction and Loyalty.
- Responsibility to society.
- Organizational and individual growth.
- Technical excellence with professional ethics.
- Employee dignity and self respect.



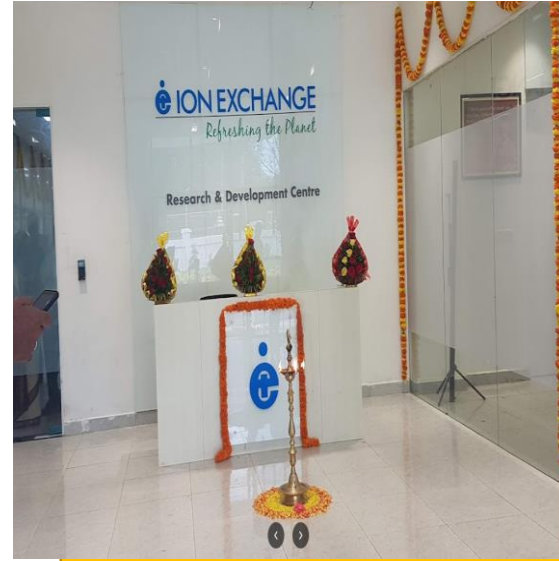
Engineering Disciplines





Design Build Project

R&D Facility at Hyderabad



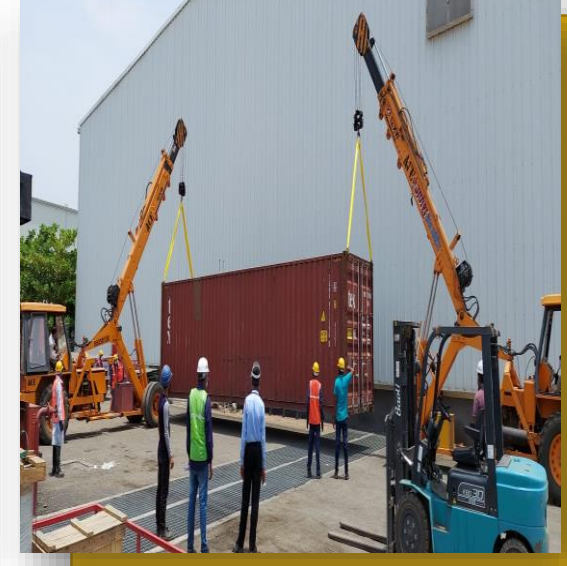
Scope of Work

- Heating, Ventilation & Air- conditioning (HVAC), Electrical, Gas Piping, Utility Piping

Project Brief

- HVAC :-
 - Air Handling Units, VRV System with cassette and Split AC, GI Ducting, Diffusers, HEPA Filters
- Electrical :-
 - Electrical and Automation Panels, Distribution boards, Lightings, Cable trays, Cable laying & termination, UPS
- Gas Piping :-
 - Piping for Compressed Air, Nitrogen, Oxygen, Hydrogen, Helium, Zero Air, Carbon di-oxide & LPG
- Utility Piping :-
 - Piping for Raw Water, DM Water & Treated Water

Pharma Packaging Facility at, Satara.



Scope of Work

- Process & Mechanical, Heating, Ventilation & Air- conditioning (HVAC), Electrical

Major component

- Air Handling unit, CHW/HW manifold, VRF system with Cassette Air conditioner, BMS panel & automation, Electrical panel & it's installation, Pure Gases piping system with orbital welding.

Project Brief

- Installation and Commissioning of AHU's, VRV system and Pressurized expansion tank for chiller.
- HVAC ducting in GI & PIR.
- Installation and testing of clean utility, black utility and gases piping.
- Installation of Insulation for Hot & cold services.
- Installation of electrical and automation panels for AHU.

API Facility at Beed Maharashtra.



Scope of Work

- Process, Utility & Mechanical, Cleanroom, HVAC & Electrical.

Deliverables

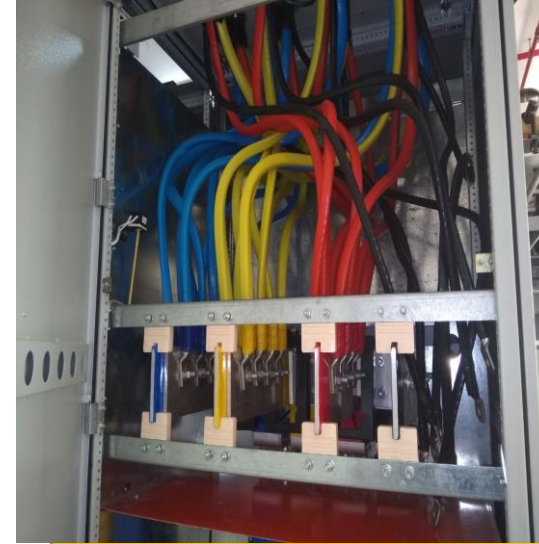
- Concept design, Basic & Detailed Engineering & Construction drawings, Procurement support for complete facility including process equipment.

Project Brief

- Total Build-up area :- 16000 sq.mtrs
- Manufacturing Capacity :

Segment	Installed Capacity	Capacity KL
a) Intermediate	- 100 MT/Month	50
b) API	- 50 MT/Month	25
- Other Constructed Areas- Warehouse, Utility Block , Effluent Treatment Plant, Fuel Storage Area .
- Total Project Cost : Approx INR 1500 Million.

Vaccine Mfg. Facility at Pune



Scope of Work

- Installation of :-
- HT panels
- LT panels
- DB's
- UPS
- Lighting & Cable trays & cable laying & termination

Value Addition

- Multi Disciplinary Coordination at all Design Stage

R&D Facility at Mumbai



Scope of Work

- Engineering and General Contracting , Procurement support

Services

- Piping, Electrical, Qualification documents, Calibration of Instruments & Miscellaneous Procurement

Project Brief

- Engineering support
- Procurement support for miscellaneous items
- Installation of mechanical and electrical services
- Qualification and validation documentation
- Calibration of Instruments

Tube Packaging Mfg. Facility at Bhilad Gujarat



Scope of Work

- Design, Supply, Installation, testing & commissioning of Process cooling water system

Major component

- Plate type heat exchanger, PPR piping, Pumping system

Project Brief

- Design built system for process cooling with PHE, PPR piping & Pumping system
- Total Project cost : Approx. 1.5 Crores
- Project Duration : 4 Months

Construction Chemical Manufacturing Plant at Khopoli.



Scope of Work

- Electrical, Gas Piping, Process & Utility Piping

Project Brief

- Electrical :-
 - Electrical Panels, Wire Mesh Fencing, Distribution boards, Lightings, Cable trays, Cable laying & termination
- Gas Piping :-
 - Piping for Compressed Air
- Process Piping :-
 - SS316 Piping for Accelerator & Admixture Tanks
- Utility Piping :-
 - Piping for Raw Water, Cooling Water & ETP

Semisolid Formulation Facility at Andheri.



Scope of Work

- Design & Execution of HVAC & Electrical, Cleanroom, Fire Alarm System, Public address System & CCTV.

Project Brief

- HVAC :-
 - Air Handling Units, Cassette and Split AC with Cordless Remote Controller, GI Ducting, Diffusers.
- Electrical :-
 - Electrical and Automation Panels, Distribution boards, Lightings, Cable trays, Cable laying & termination, UPS
- Fire Alarm System :-
 - Testing & Commissioning of Analogue Addressable Photoelectric + thermal Multi-sensor Detector, Smoke sadetector with Response Indicator
- Public Address System & CCTV :-
 - Testing & Commissioning of Dual Tone Ceiling Mounted Speaker, Supply, Design, Testing & Commissioning of axCCTV System



Engineering Projects

Oncology API Facility at Visakhapatnam



Scope of Work

- Mechanical, Electrical & Piping Design and Site Construction

Deliverables

- Concept Design, Basic & detailed Engineering & Site supervision support

Project Brief

- Total Project cost : Approx. 80 Crores
- Project Duration : 11 Months
- No. of Reactors : 21
- No. of Isolators (Oncology Plant) : 26
- No. of Isolators (Oncology Lab) : 2
- Utility expansion with new Cooling Tower, Chiller, Boiler, Nitrogen and Brine Plant

OSD Facility at Ahmedabad



Scope of Work

Deliverables

Value Addition

Standards/Codes

- Architectural, Process, Mechanical, Cleanroom, Heating Ventilation & Air- conditioning (HVAC), Electrical
- Concept design, Basic & Detailed Engineering & Construction drawings, Procurement support for complete facility including process equipment.
- Energy efficient design, Primary variable Chilled water circuit, Screw air compressor, Water recovery system
- Complete plant design as per Eu Gmp & PICS.
- EU GMP, PICS, WHO, cGMP

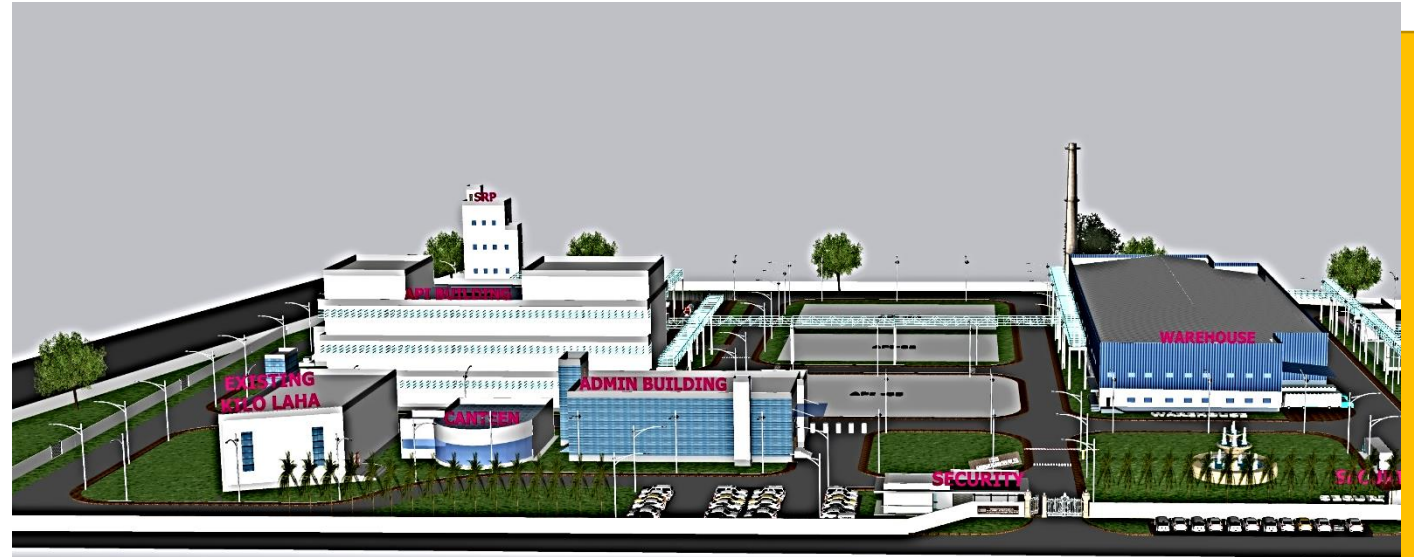
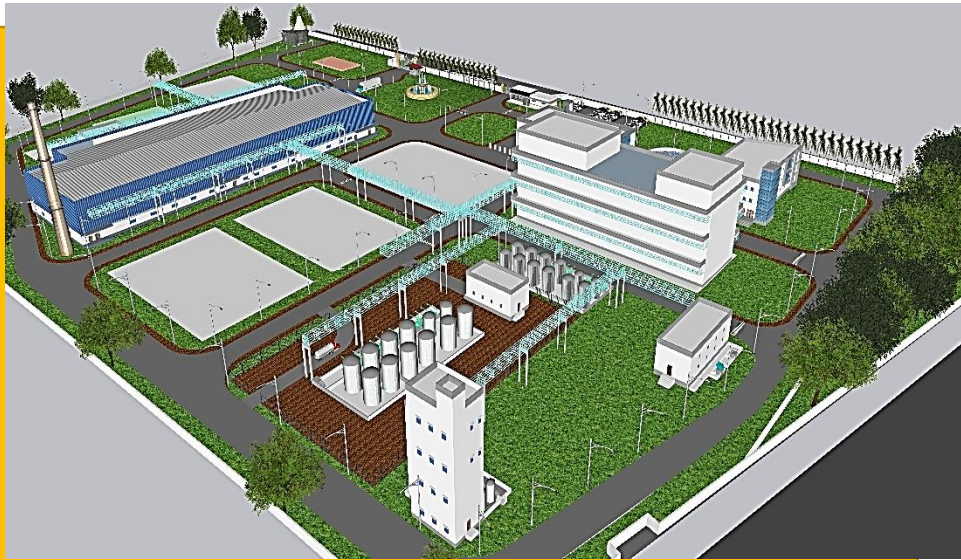
OSD Facility at Ahmedabad



Project Brief

- Total Built-up area : 9500 sq.m
- Granulation suites capacity : 250kg & 60kg
- Production Output capacity : 620mio/annum of tablets & 270mio/annum of capsules
- Main Building :
 - 1) OSD Production Block (G+1 floor)
 - 2) Admin, QA, QC & FR&D Block (G+1 floor + 1 floor expandable in future)
- Utility Building : Utility equipment like Compressor, Boiler, Chiller, Cooling Tower, Water treatment, etc.
- Other Constructed Areas : Security Cabin, Metering Kiosk room, Parking , U/G Water tank

Engineering & Construction Management Service API's Manufacturing Facility, M.P



Scope of Work

- Civil, Architecture, Process, Utility & Mechanical, HVAC & Cleanroom, Electrical & Instrumentation, Fire Fighting System.

Deliverables

- Concept, Basic & Detailed Engineering, Construction drawings, Procurement support for complete facility including process equipment.

Project Brief

- Total Build-up area :- 15500 sq.mtr
- Plant Capacity :

Segment	Capacity KL
a) Stream A -	40
b) Stream B -	30
c) Stream C -	30
- Other Constructed Areas- Warehouse, Utility Block , Effluent Treatment Plant, Fuel Storage Area .
- Total Project Cost : Approx. INR 250 Million.

Soft Gelatin Mfg. Facility At Nepal



Scope of Work

- Architectural, Process, Utility & Mechanical, Cleanroom, HVAC & Electrical

Deliverables

- Concept design, Basic & Detailed Engineering & Construction drawings, Procurement support & construction supervision services, FAT.

Project Brief

- **Built-up area : 1500 sq.m**
- **Output Capacity : 65000 capsules/hr**
- **Low RH (10%) design for critical process area.**
- **Major Process Equipments :**
 - Medicament Tank : 300L & 100L
 - Gelatin Preparation Vessel : 650L
 - Storage Vessel : 200L & 100L

Sweet & Namkeen Mfg. at Thane



Scope of Work

- Mechanical, Electrical & Plumbing (MEP) Design and Site Construction supervision

Deliverables

- Concept design, Basic & Detailed Engineering & Construction drawings, Procurement support & construction supervision services.

Project Brief

- Built-up area : 5200 sq.m
- Multistorey manufacturing building with storage area, company sales outlet, Admin & office area
- Basement + Ground + 4 Floor Construction.
- Utility systems like thermic fluid heaters, water treatment, ETP, waste composter etc

Food Processing Plant at Satara. – U/p



Scope of Work

- Process, Utility & Mechanical, HVAC, Electrical & Instrumentation, Fire Fighting System.

Deliverables

- Concept, Basic & Detailed Engineering, Construction drawings, Procurement support for complete facility including process equipment.

Project Brief

- Total Build-up area :- 4700 Sq.mtr.
- Basement + Ground + 2 Floor Construction.
- Plant Capacity : 12 Ton/day
- Solvent recovery plant, Water Treatment, Peso Tank Farm.

Industrial & Water treatment Chemicals Manufacturing Plant at Pune.- U/p



Scope of Work

- Civil, Architectural , Process, Utility & Mechanical, Electrical, Fire Fighting System.

Deliverables

- Concept, Basic & Detailed Engineering, Construction drawings, Procurement support, Process Design Support.

Project Brief

- Total Build-up area :- 1550 Sq.mtr
- Constructed Areas-
 - - Acid Tank Farm.
 - - E.T.P
 - - Explosive storage.
 - - Boiler Room.
 - - ZLD, Fire Pump Room.



**One Stop for All Your
Engineering Needs!!!**

Major Client





LUPIN LIMITED
Plot No. 130, Road No. 11, Jawaharji Nehru Pharma City
Panarada (M), Visakhapatnam - 531 019
Tel: +91-8924-289909
Fax: +91-8924-288811

Letter of Appreciation

This is to certify that *M/s Integrated Project Management Services (IPMS)* was our technical partner in our **Oncology API** project in Vizag, Andhra Pradesh from August 2016 to June 2017.

The scope of project was to provide **Basic and Detailed Engineering consultancy** for below mentioned facilities;

- Oncology API Block (Onco MPP3)
- Oncology QC & Process Development Lab
- Utility block expansion
- Cryogenic facility (Liquid Nitrogen)

IPMS project team has completed the whole assignment as per scope and within timelines of project.


I/We have found IPMS team to be competent consultants with good knowledge of regulations, processes, containment and the ability to impart this knowledge to client's projects.

I/We wish to appreciate the role IPMS team in rightly understanding our requirements, critically examining the issues, providing timely optimum solutions.

I/We are completely satisfied with IPMS team capabilities and expertise in the overall project execution and I/we have no reservations in recommending IPMS to others for their projects.

For LUPIN LTD,
[Signature]
07/03/19
NAME & DESIGNATION
Ranjay Singh
Manufacturing Project

Registered Office: 3rd Floor, Kalpataru Inspiro, Off W. E. Highway, Santacruz (East), Mumbai - 400 066 India. Tel: (91-22) 0640 2325.
Corporate Identity Number: L24100MH1983PLC029442 www.lupin.com



Quest Pharmaceuticals Pvt. Ltd.
Registered & Corporate Office : P.O. Box No. 84, Adarshnagar, Birgunj, Nepal
Tel: +977-418226, +977-418177, E-mail: quest@quest.com.np, corporate@quest.com.np

Date: 24th July 2019

Letter of Appreciation

To,
M/s Integrated Project Management Services,
Unit No.4, Sita Vihar, Bahind Damani Estate,
LBS Marg, Thane (West)- 400 602,
MH State, India.

Sub-Softgel Manufacturing Facility at Birgunj, Nepal.


We would like to place on record our appreciation for the Conceptual, Basic, detailed engineering with Procurement assistance, Factory analysis test and Construction management services provided by our Technical Partner **M/s. Integrated Project Management Services (IPMS)** for our **Softgel Manufacturing** facility at Birgunj, Nepal.

IPMS team contribution in the design of this facility is highly appreciable. The facility has been set-up as per highest safety requirements & cGMP standards.

IPMS project team is doing the whole assignment as per scope and within timelines of project.

IPMS team knowledge and flexibility have been a great help for our project and we have no hesitation for recommending you to other companies for Pharma Project designs and wish you the best in all your future endeavours.

Thanking You,
For: Quest Pharmaceuticals Pvt. Ltd.
[Signature]
(Uttam Kumar Shrestha)
Director-Business Promotion



Marketing Office : Dasi Sadan, Teku, Kathmandu, Nepal, Tel: +977-1-4240304, 4239293, Fax: +977-4231028, E-mail: questltd@quest.com.np
Factory : Chhatrapati, Baha, Nepal, Tel: +977-51-580172, 580190, Fax: +977-51-580172, E-mail: questfactory@quest.com.np
PAN: 303164723, Bankers : Nabil Bank, Birgunj, Website : www.quest.com.np



20.07.2018

Letter of Appreciation

This is to certify that *M/s Integrated Project Management Services (IPMS)* was our technical partner in our **Food Products Mfg.** project at Thane.

The scope of project was to provide **MEP & HVAC system** for entire facility admeasuring @ 52000 Sq. Ft.

IPMS project team has completed the whole assignment as per scope and within timelines of project.

I have found IPMS team to be competent contracting company with good knowledge of job, regulations, processes and the ability to impart this knowledge to client's projects.

I wish to appreciate the role IPMS team in rightly understanding our requirements and providing timely optimum solutions.

I am completely satisfied with IPMS team capabilities and expertise in the overall project execution and I have no reservations in recommending IPMS to others for their projects.

Thanks & Regards,
[Signature]
Mr. Prashant Koiran
Owner

Premium Dryfruits Sweets, Farsan & Chai | H.O.: Shop No. 17 & 18, Gopurin Socity, | Tel: 022-2540 5679 / 2543 5997
Mandhokwad, Thane (W), - 400 022, Maharashtra, | E-mail: prashantk@prashant.com



Date: 25.03.2018

To,
M/s Integrated Project Management Services,
Thane West

To Whomsoever It may concerned

This is to certify that IPMS has provided turnkey solution for Process Cooling Water system for our Green Field Lami Tube manufacturing facility at Chandi village near Bh-lad, Gujarat state. Project was assigned and commissioned in 2016.

We appreciate efforts taken by IPMS for designing, supply, erecting and installing perfect solution for our process cooling requirement. We also appreciate the support provided by IPMS post commissioning for trouble shooting.

IPMS, their team, their knowledge and flexibility have been a great help for our project and we recommend them to be used in future projects.

Yours sincerely
[Signature]
Project Manager
Mr. Pradeep Ranteke
Essel Propack Ltd



ESSEL PROPACK LIMITED
Village Vastol
Taluka Shergapur, Dist. Thane
Maharashtra 421 004, India
T : +91-9535723000 / 2
www.esselpropack.com

Registered Office:
P. O. Vastol
Taluka Shergapur
Dist. Thane, Maharashtra 421 004, India
CN: L7430M-11962PLC029442



Enviro House,
47-48, MIDC, Wagle Industrial Estate,
Sion Road, Thane - 400604, India
Phone: +91 22 2603 8208 / 89
CIN: U99999MH1988PTCO49388
www.envirocare.co.in
info@envirocare.co.in

TO WHOMSOEVER IT MAY CONCERN

Envirocare Labs Private Limited, has been actively working with customers, within the field of Environment for over 4 decades supporting them with Monitoring, Analysis, Research, Training, Inspection & Audits.

With accreditations under ISO 17025 by NABL, recognized by MoEF, MoFPI, FSSAI, BIS, EIC, APEDA, AGMARK and certifications for QMS, EMS and OSHAS help us, serve our customers better.

Our state-of-art facility laboratory facility in Thane, Mumbai spread across 50000+ sq. ft. hosts 200+scientists and executives.

We are proud to be the recipient of the Platinum Rating by IGBC under Green Building Interiors making us the 1st Testing Laboratory in the country to be certified as a Green Building.

We would like to thank Integrated Project Management Systems (IPMS) for providing Engineering Design services and solutions for our Platinum Rated IGBC Green Building Interiors at Wagle Industrial Estate, Thane West.

Below mentioned services were provided by IPMS for our project

- **Designing and Engineering of,**
 - Mechanical & Fire Protection System
 - Electrical Systems
 - HVAC Systems

• **Procurement Support**

IPMS team was competent to understand, design and execute the project as per our need and we appreciate their knowledge, flexibility and the value addition contributed in our project. We can recommend them to be used in future projects.

For Envirocare Labs Pvt. Ltd.




Srikant A. Naik
Sr. Manager – Administration
16th June 2022



Lechler India Private Limited
Thane, Maharashtra

Date: 30.07.2019

To,
M/s Integrated Project Management Services,
Thane West

To Whomsoever It may concerned

This is to certify that IPMS has provided erection and commissioning services for our water spray systems for various applications in Cement / Steel Industries pertaining to air pollution control equipment.

IPMS has been associated with us since year 2016 and they have executed various projects with us for piping systems and control skid.

We found IPMS team to be competent enough to understand, design and execute the projects as per clients need.

IPMS' their team, their knowledge and flexibility have been a great help for our projects and we recommend them to be used in future projects.

Yours sincerely

Mr. N. Mohan
Division Leader
Environmental Division
Lechler India Pvt. Ltd.



Lechler India Private Limited - Precision Nozzles - Nozzle Systems
Head Office: B-2, Main Road, Wagle Industrial Estate, Thane - 400 604 - Phone: +91 22 4863 4444 - lechler@leclerindia.com - www.lechler.in
Reg. Office: Plot A, 105, Sector 10, 1000 Industrial Estate, Thane(W), MIDC, Reg. No. U22209MH1988PTCO1131



Dear Atul Patunkar,

I appreciate all the efforts and time spent during the planning, execution and validation stages of our Ultra-Modern Pharmaceutical Manufacturing Plant in Lagos, Nigeria.

Your effort to coordinate vendors, review designs and advice on best practice was very valuable. We witnessed the birth of a new beginning with your kind guidance and attention to details.

I wish you best of luck in your future endeavours and hope to have another project with you in the near future.

Thank you.

Yours sincerely,
For: DAILY-NEED INDUSTRIES LIMITED



SEGUN JOLAYEMI
Executive Director, Operations
August 2014.

Plot 9 & 10, Unity Close, Off Ladoke Street,
Dagang Industrial Estate, Lagos.
Tel/Fax: 01 - 7938367
Email: info@dailyneedgroup.com
www.dailyneedgroup.com



12 July, 2018

To,
M/s Integrated Project Management Services, Thane (West), Maharashtra, India.

TO WHOMSOEVER IT MAY CONCERN

It is with great pleasure we express our thankfulness of the full works earned out by IPMS for various Facility Engineering Design services and solutions pertaining to our pharmaceutical clients located in India, Middle East, Central Asia, CIS & China regions.

IPMS has been associated with us since year 2016 and they have executed various pharmaceutical domain projects with us and accomplished them with quality standings, timely delivery & safety standards that met our specifications & our Client expectations. They have demonstrated sufficient resources required together with qualified technical & managerial staff to complete these works. During the tenure of our ongoing engagement IPMS have provided following services to our pharmaceutical client formulation projects:

- Facility Design and Engineering - Conceptual & Detailed
- Facility cGMP + GEP Review
- GMP - GEP audits of pharmaceutical facilities in accordance with international regulatory norms like EU GMP, USFDA, WHO-GMP, PICs, etc. and reports submission inclusive remediation measures for the non-compliant observations
- Procurement Support
- Construction Quality Supervision and Management
- Commissioning, Qualification and Validation and related Documentation Support

We without hesitation recommend IPMS to any pharmaceutical domain client for execution of similar assignments.

With regards,

For **Pharmaceutical Solutions FZCO, Dubai, UAE**



Kailash Ukhade
Vice President - Projects (PharmSol Group)

Pharmaceutical Solutions FZCO
3500, 7th Floor Tower, Cluster 07
Jumeirah Lakes Towers, P.O. Box 301115
Dubai, United Arab Emirates
T: +971 4 42819511 | F: +971 4 42819781
info@pharm-sol.com | www.pharm-sol.com



**One Stop for All Your
Engineering Needs!!!**

Why IPMS

- Agile, responsive and flexible enough for your needs.
- Qualified, highly experienced, committed team of motivated individuals.
- Strong Pharmaceutical background and proven experience.
- Global Experience.
- Knowledge leaders with high intellectual horsepower.
- Knowledge of entire project life cycle.
- Hands on experience from Design to Operation and Maintenance of facilities.
- Ability to integrate GMP with Design to Construction.

Atul Patunkar



Basic Qualification – Bachelor of Engineering (Mechanical)
Current Role – Managing Director
Professional Experience – 22 years
Worked previously at – Orchid Chemicals & Pharmaceuticals, Lupin Ltd and Project Manager at a multinational consultancy firm.
Experts in – API, Chemicals & Formulation Projects

Rajendra Wagh



Basic Qualification – Bachelor of Engineering (Chemical)
Current Role – Director- Project Engineering
Professional Experience – 20 years
Worked previously at – Arati Industries and as HOD at a multinational consultancy firm.
Experts in – API, Chemicals, Formulation, Laboratories & Biotech Projects

Dhaval Mehta



Basic Qualification – Bachelor of Engineering (Chemical)
Current Role – Director – Business Development
Professional Experience – 20 years
Worked previously at – Neela, IUS, L & T, SPCPL and as HOD at a multinational consultancy firm.
Experts in – Clean Utilities, Formulation, Laboratories & Biotech Projects

Parag Kolve



Basic Qualification – Bachelor of Engineering (Electrical)
Current Role – Project Execution
Professional Experience – 20 years
Worked previously at – Novartis, Cipla, Jacobs Singapore and as HOD at a multinational consultancy firm. **Experts in** – Formulation, Laboratories, Chemicals, API & Biotech Projects



Address :

Unit No. 301/C, 3rd Floor, Wifi Park IT Premises Co. Society Ltd, Plot No. B-3., Wagle Estate, Thane (W) Pin - 400604, Maharashtra, India.



GST Number:

27AAFFI0860D1ZP



Contact Number :

Tel: +91-7738468462/63

Cell: +91 7045388568



IEC Code:

AAFFI0860D



Website :

www.ipms-engg.com



MSME REGISTRATION CODE :

UDYAM-MH-33-0006647



Email:

mktg@ipms-engg.com